



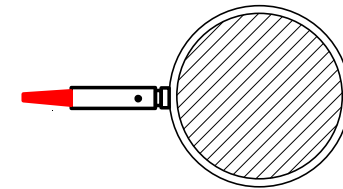
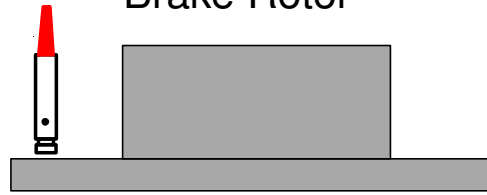
Model IS-1F Sensor
P/N 650301

Albion Devices, Inc.

531 Stevens Ave. West
Solana Beach, CA 92075
858-792-9585
www.albiondevices.com

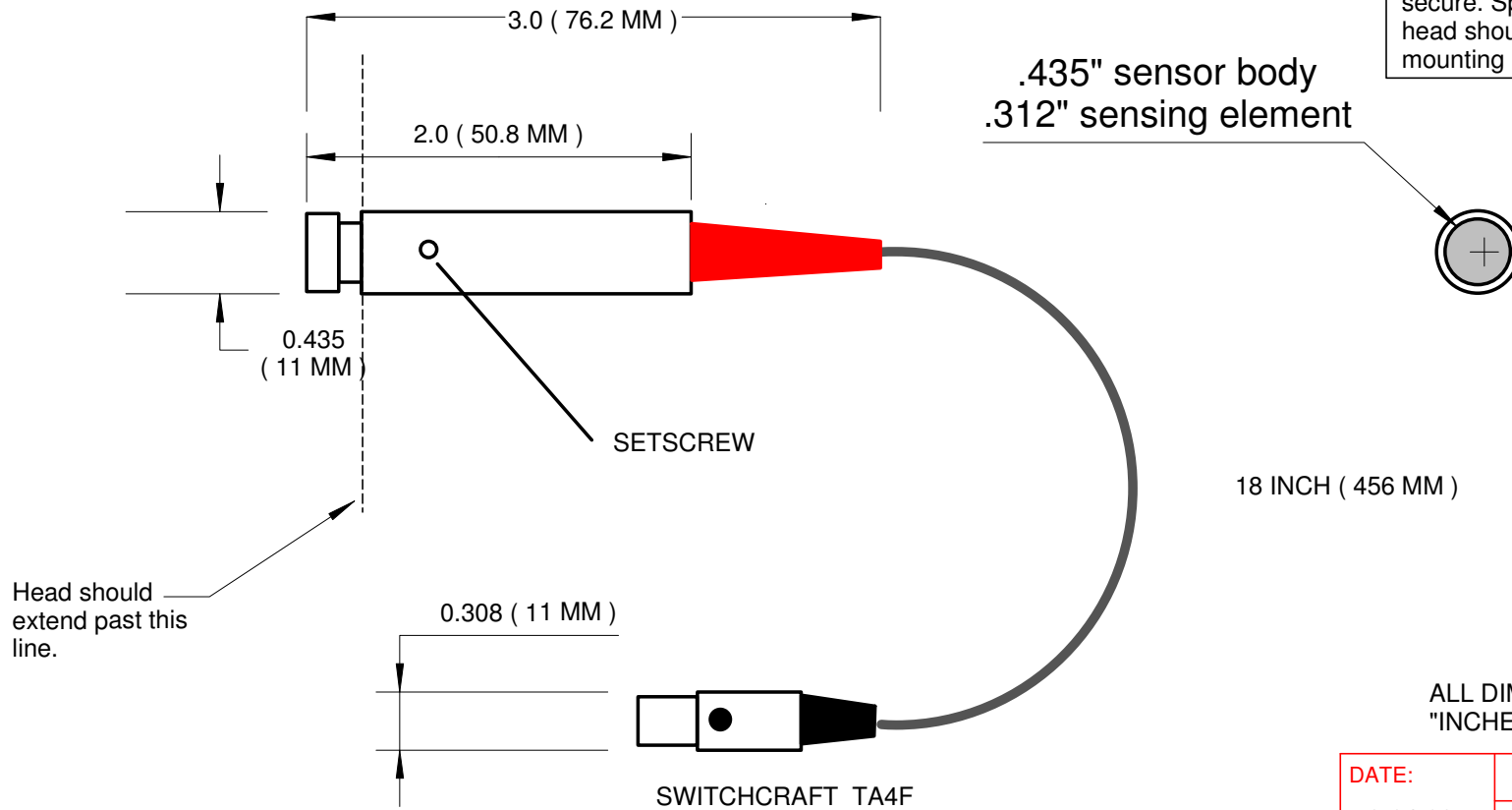
Piston or Shaft

Brake Rotor



FLOATING HEAD,
SELF-ALIGNING,
4-oz SPRING TENSION

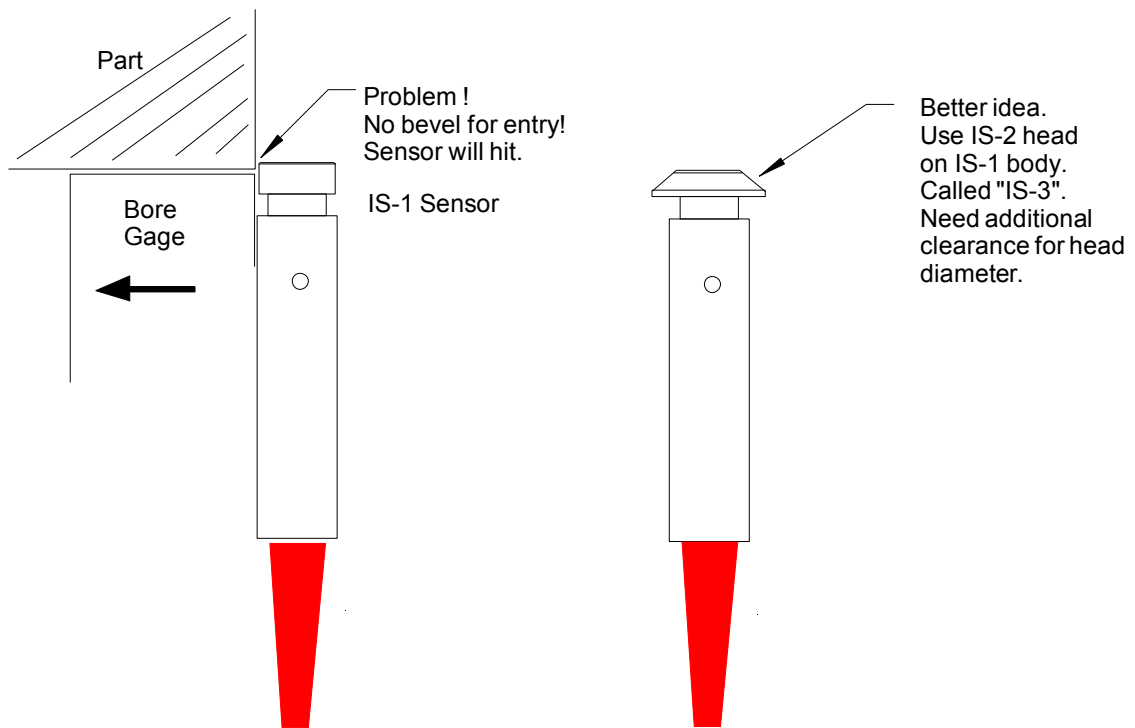
Mount in a .437" hole. Use setscrew to secure. Spring-loaded head should protrude from mounting block.



ALL DIMENSIONS IN
"INCHES" (MM)

DATE: 3-24-98	ALBION DEVICES
P/N: 650301R	DESCR: IS-1 WORKPIECE SENSOR, RED

Problem with IS-1 radius head for sliding applications



Specifications

IS-1F Temp Sensor

- Size, Overall: .435 in. dia x 3.0 in long with cable strain relief.
- Size, sensor body only: .435 in dia. X 2.0 in long.
- Designed to fit .437 (7/16") hole. A setscrew can lock the position.
- Cable length: Std. 6 ft, other lengths available.
- Cable: Belden 9533, 3-wire cable
- Connector: SwitchCraft TA4MLX, 4-pin, .308 in dia.
- Sensor head spring force: 4 oz.
- Sensor head is self-aligning to a flat surface, +/- 2 degree from normal.
- Weight: 3 oz.
- Speed of response: 2-3 seconds to 90% of final value, flat, smooth surface assuming 80 % contact on carbide measuring
- Electrical interface requires Albion amplifier input.